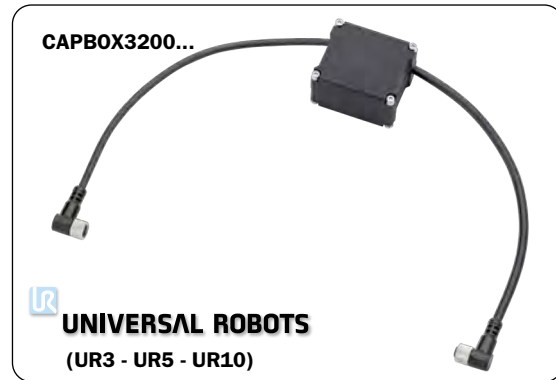


Capacitor Box

Capacitor Box allows a correct functionality of Gimatic's electric grippers in all the cases where power supply is limited in peak current (i.e. some collaborative robots).

- 2 models available (one for grippers size 16 and 25, one for grippers size 32).
- Compatible with all Gimatic electric actuators.
- Compact dimensions.
- Embedded connection of power supply, command signal and additional I/O.
- Plug & Play connection with standard M8 8-pin connectors and angular M8 3-pin/4-pin connectors (depending on the version).

Model	Price
CAPBOX1625 03	\$290.00
CAPBOX1625 04	\$290.00
CAPBOX3200 03	\$313.00
CAPBOX3200 04	\$313.00

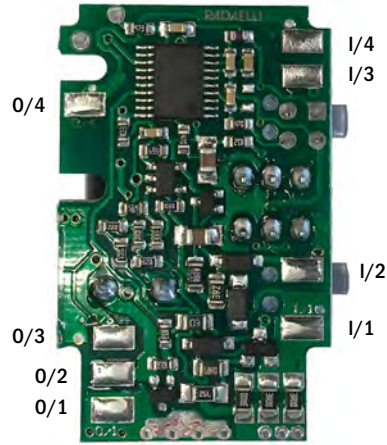
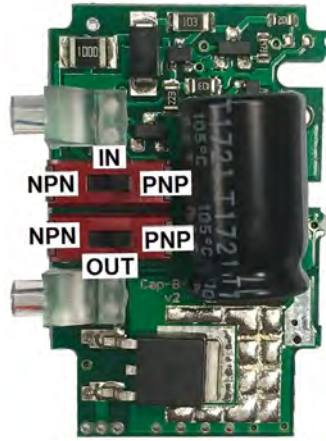


	CAPBOX1625-03 CAPBOX3200-03	CAPBOX1625-04 CAPBOX3200-04
Body material	Nylon PA12	
Overall dimensions	42 mm x 48.5 mm x 28 mm	
Mass	60 ÷ 70 g	
Allowed temperature range	5 ÷ 60° C	
Electrical connection	Input: M8 8-pin angular female	
	Output: M8 3-pin angular female	Output: M8 4-pin angular female
Environmental degree	IP66	
Power supply	24 Vdc ± 10%, 0.5 Arms	
Input command signal (Default connection)	NPN digital input <ul style="list-style-type: none"> • low: closing command • high: opening command 	
Output command signal (Default connection)	NPN digital output <ul style="list-style-type: none"> • low: closing command • high: opening command 	
Auxiliary I/O	none	1 signal (peak output or force control depending on gripper model)
Status LED	2 LED Green: power supply is present Yellow: gripper command status	

Electrical Connections

The Capacitor Box circuit has an input side and an output side. The input side allows for connection of power supply, command signal and auxiliary I/O by a M8-8pin female connector.

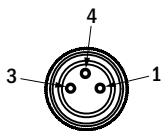
The output side allows for direct connection of 3 or 4 pins Plug & Play grippers' models. Default configuration is with both input and output command signals in NPN version. The user can customize configuration by simply modifying electrical connections according to following table.



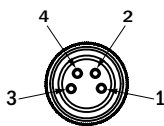
Standard input cable (*)		
I/1	+24Vcc	Grey
I/2	GND	Red
I/3	Digital input	Blue
I/4	Auxiliary I/O	Yellow

Standard output cable (*)		
O/1	+24Vcc	Brown
O/2	GND	Blue
O/3	Digital output	Black
O/4	Auxiliary I/O	White

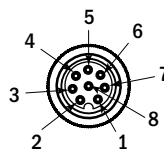
(*) Standard connection for 3 pins grippers' models



M8 3 pins female	
1	Brown
3	Blue
4	Black



M8 4 pins female	
1	Brown
2	White
3	Blue
4	Black

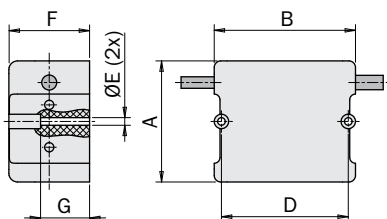


M8 8 pins female	
1	White
2	Brown
3	Green
4	Yellow
5	Grey
6	Pink
7	Blue
8	Red

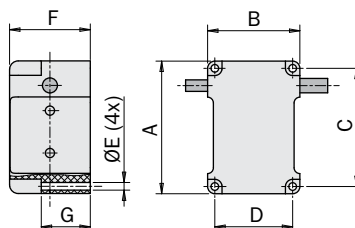


Dimensions (mm)

CAPBOX1625



CAPBOX3200



	CAPBOX1625	CAPBOX3200
A	46	42
B	49	32
C	41	-
D	27	44
E	Ø2.65	
F	28	
G	17	