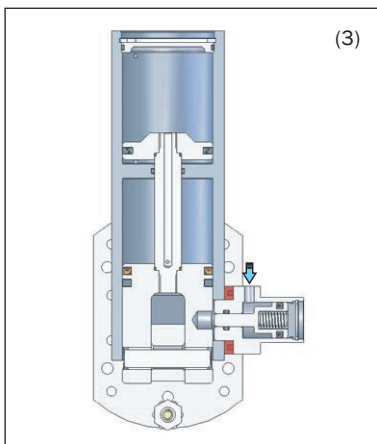
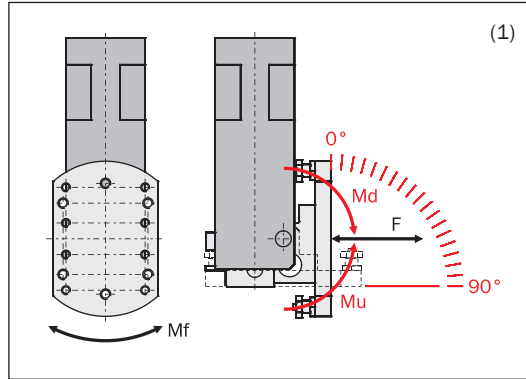
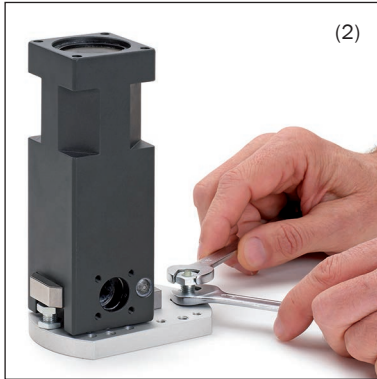


## Pneumatic tilt units for EOATs, series RBT

- 90° rotation (1).
- Two rubber adjustable end strokes (2).
- High lifting torque.
- Safety lock (3).
- Optional magnetic sensors.



	RBT40	RBT50	RBT63
Medium	Filtered, lubricated / non lubricated compressed air		
Pressure range		2 ÷ 8 bar	
Unlock pressure		> 3.5 bar	
Temperature range		5 ÷ 60 °C.	
Tilt angle		90°	
End stroke adjustment	± 4°	± 3°	± 2°
Cycle air consumption	135 cm <sup>3</sup>	243 cm <sup>3</sup>	441 cm <sup>3</sup>
Lift torque at 6 bar (90° → 0°)	(Mu) > 24 Nm	> 45 Nm	> 78 Nm
Drop torque at 6 bar (0° → 90°)	(Md) > 11 Nm	> 22 Nm	> 42 Nm
Allowed load	(F) 100 N	200 N	300 N
Allowed moment	(Mf) 7 Nm	12 Nm	30 Nm
Weight	1050 g	1635 g	2390 g



