

Side manifold block (1 channel)

(kit with screws)



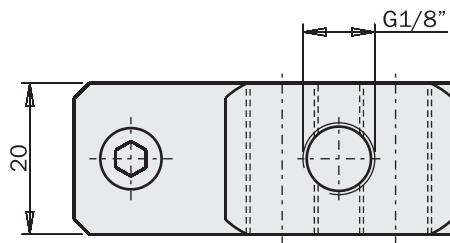
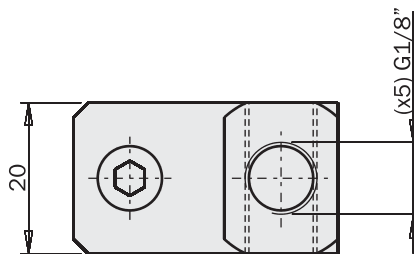
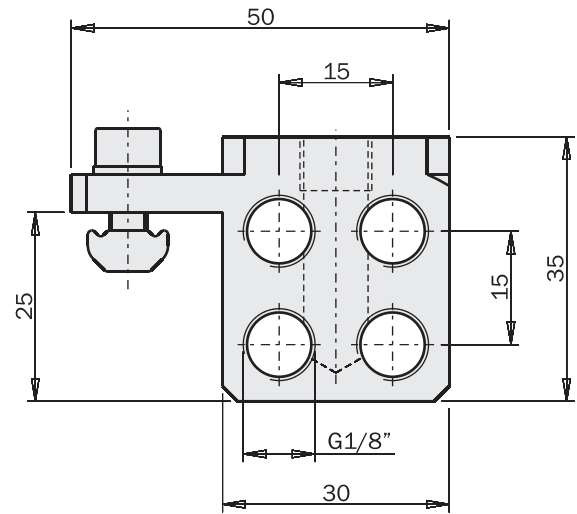
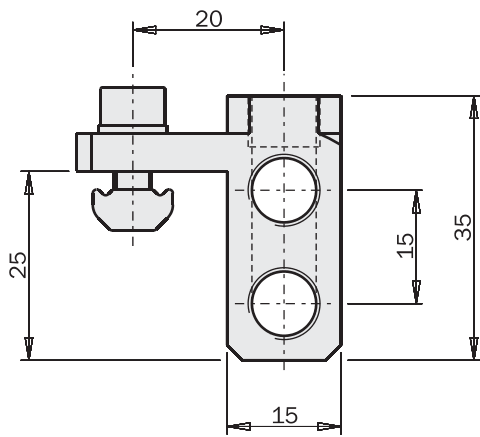
G1/8" (x5)



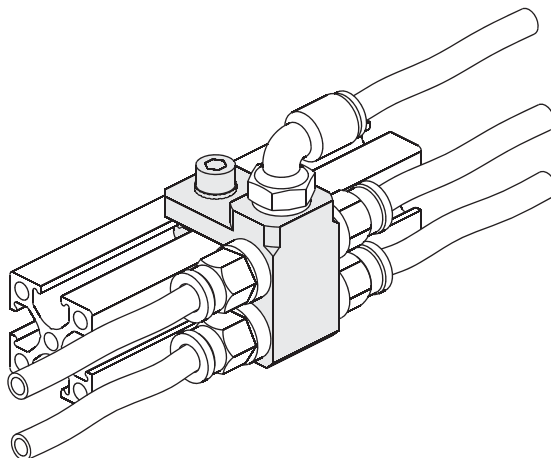
G1/8" (x9)

	MFI-A68	MFI-A69
EMF-2518	EMF-2518	EMF-2518
EMF-2525	EMF-2525	EMF-2525
EMF-5025	EMF-5025	EMF-5025
Weight	30 g	50 g

FIRST ANGLE PROJECTION



Application example



Side manifold block (2 channels)

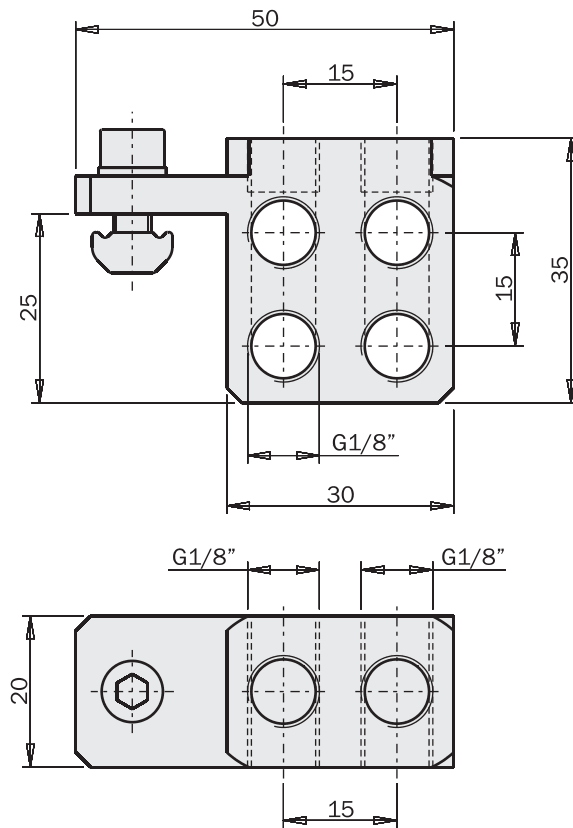
(kit with screws)



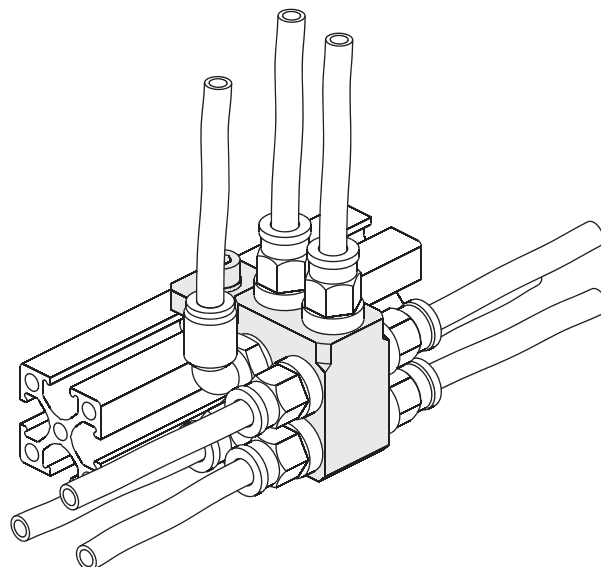
G1/8" (5+5)

	MFI-A70
	EMF-2518
EMF-....	EMF-2525
	EMF-5025
Weight	48 g

FIRST ANGLE PROJECTION

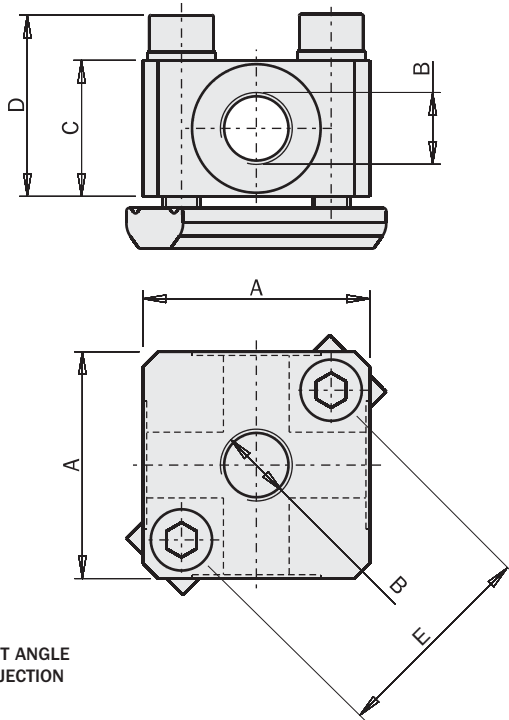


Application example



Manifold block

(kit with screws)



	MFI-A66	MFI-A67
A [mm]	30	40
B [mm]	(x5) G1/8"	(x5) G1/4"
C [mm]	18	20
D [mm]	24	23
E [mm]	28	35
Weight	50 g	80 g



Application example

