

## 2-jaw self-centering angular pneumatic gripper series AA-25-N0

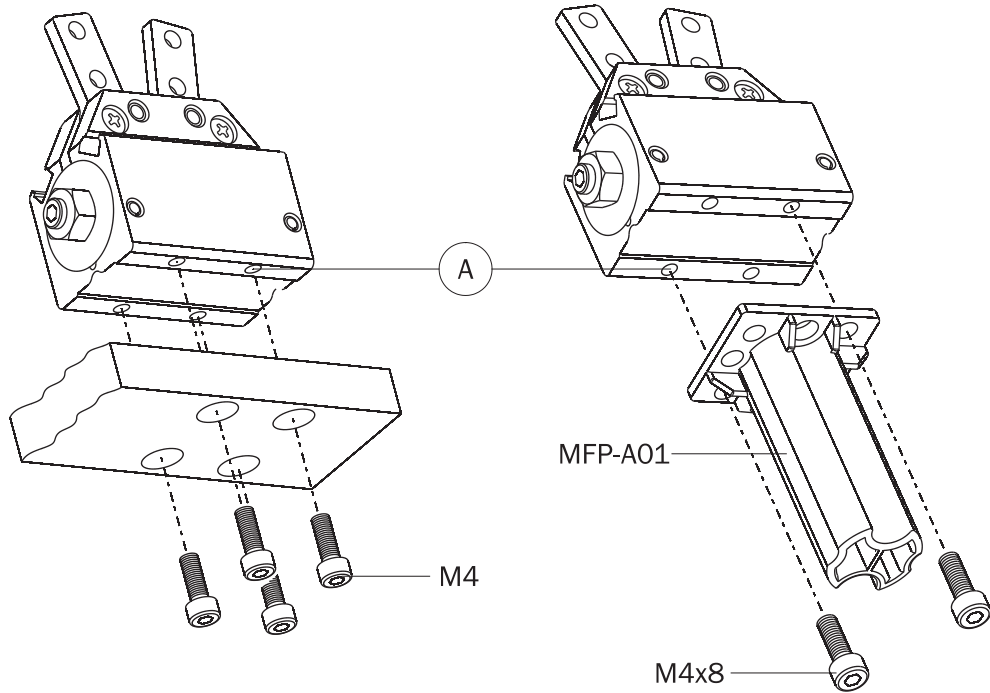
- Single-acting.
- Spring opening.
- Closing stroke adjustment.
- Optional magnetic sensors.



	AA-25-N0
Medium	Filtered, lubricated / non lubricated compressed air
Operating pressure range	2.5 ÷ 8 bar
Operating temperature range	5 ÷ 60 °C.
Stroke (±1°)	2 x 14°
Closing torque at 6 bar on each jaw	125 Ncm
Total closing torque at 6 bar	250 Ncm
Opening torque at 0 bar on each jaw	25 Ncm
Total opening torque at 0 bar	50 Ncm
Maximum working frequency	2 Hz
Cycle air consumption	2 cm <sup>3</sup>
Closing time without load	0.02 s
Weight	105 g

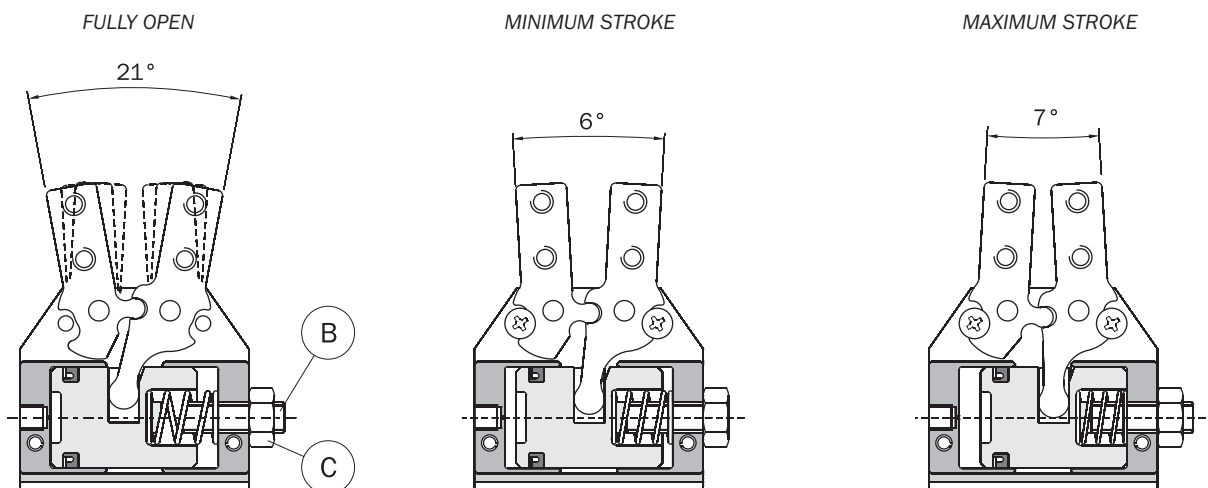
### Gripper fastening

Use four or at least two screws M4 in the threaded holes (A) on the base of the gripper.

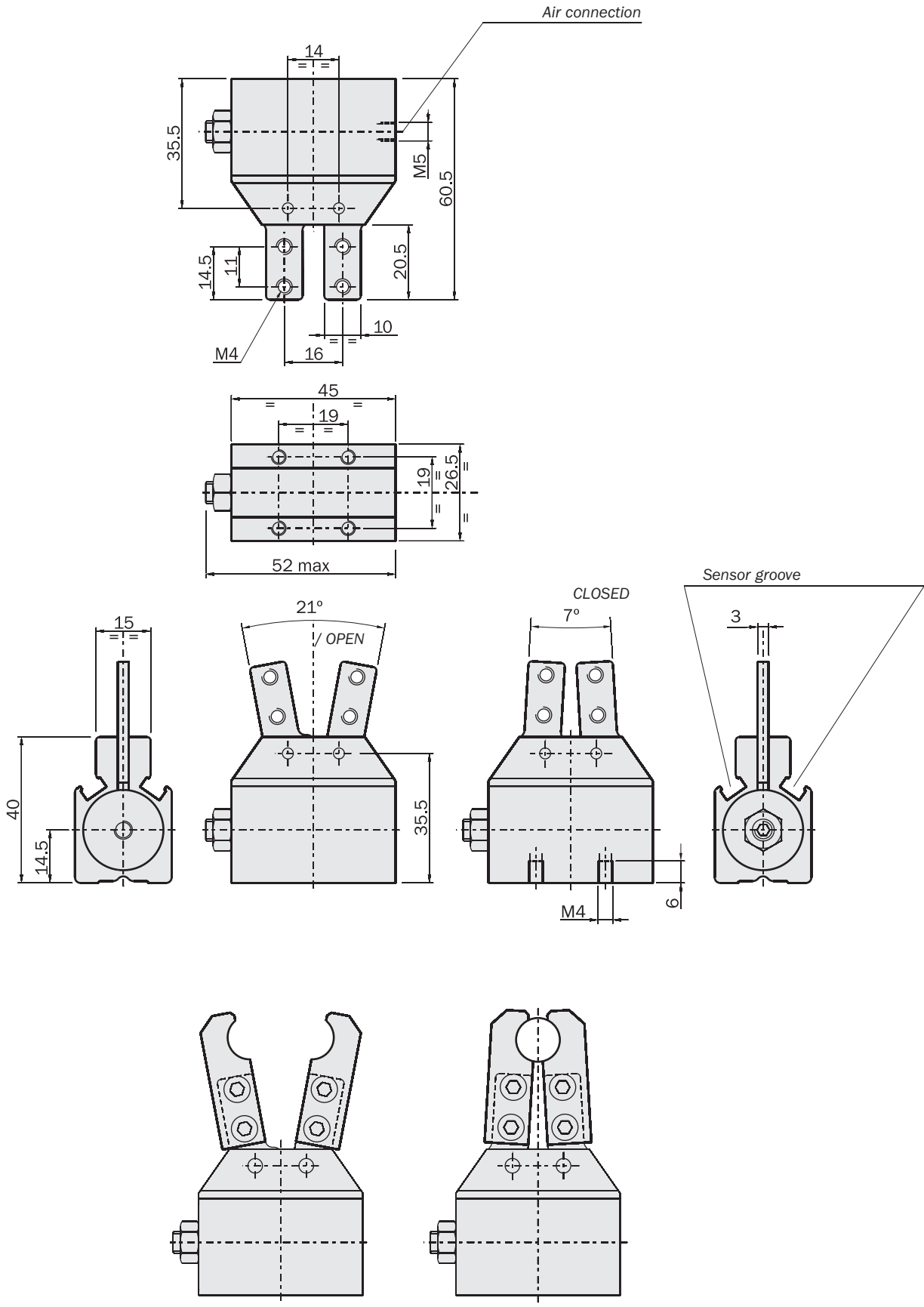


### Stroke adjustment

Use the grub screw (B) to adjust the stroke, then lock it with the nut (C).



Dimensions (mm)

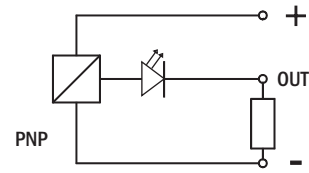
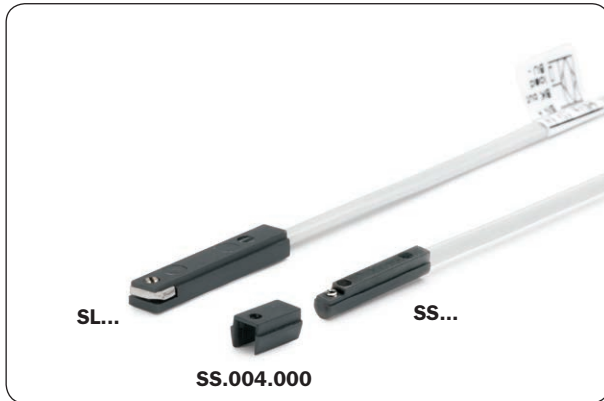


FIRST ANGLE PROJECTION

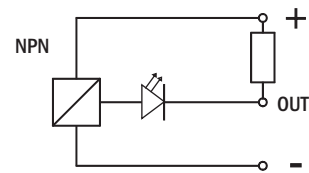
**Sensors**

The operating position can be checked by magnetic sensors (optional), that detect the magnets inside. Therefore a near big mass of ferromagnetic material or intense magnetic fields may cause sensing troubles.

Use sensors:

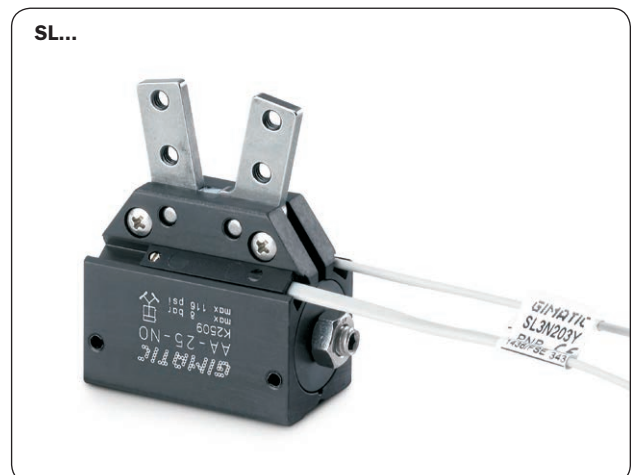
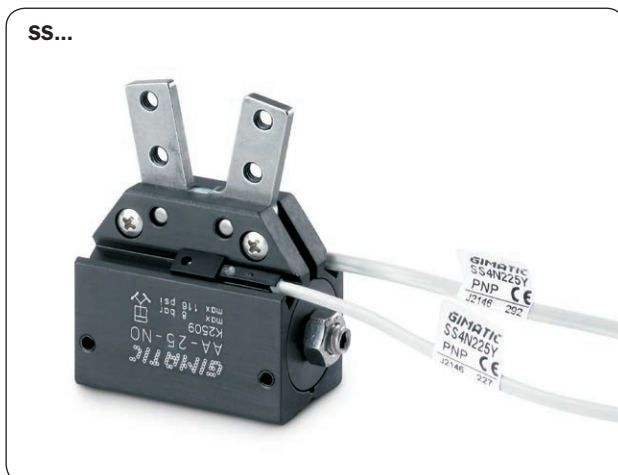


Magneto-resistive

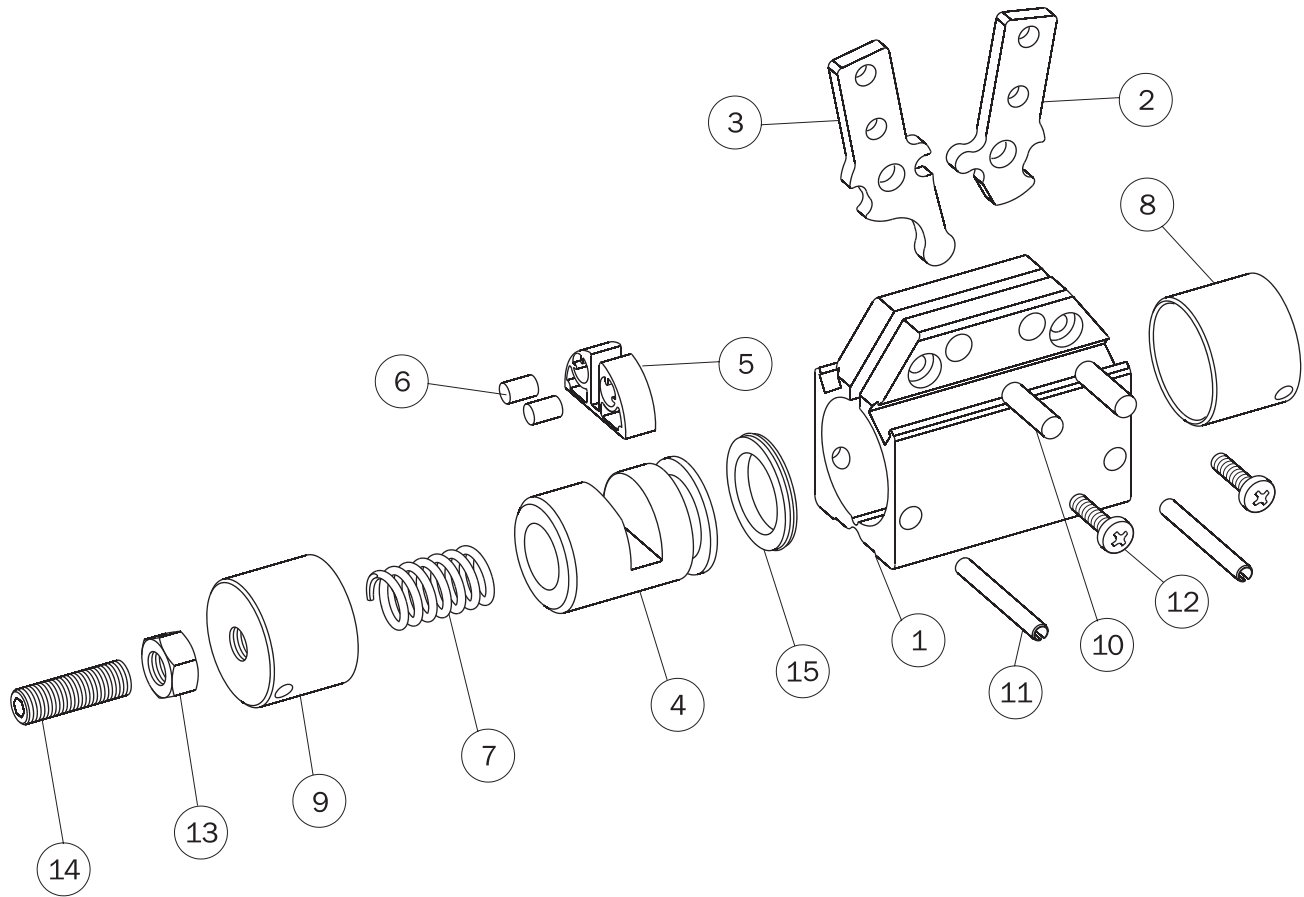


			AA-25-NO
SL4N225-G	PNP	2.5m cable	<input checked="" type="checkbox"/>
SL4M225-G	NPN	2.5m cable	<input checked="" type="checkbox"/>
SL3N203-G	PNP	M8 snap plug connector	<input checked="" type="checkbox"/>
SL3M203-G	NPN	M8 snap plug connector	<input checked="" type="checkbox"/>
SS4N225-G	PNP	2.5m cable	<input checked="" type="checkbox"/> (1)
SS4M225-G	NPN	2.5m cable	<input checked="" type="checkbox"/> (1)
SS3N203-G	PNP	M8 snap plug connector	<input checked="" type="checkbox"/> (1)
SS3M203-G	NPN	M8 snap plug connector	<input checked="" type="checkbox"/> (1)

(1)  
By the adapter (SS.004.000) provided with the pack K-SENS.



## Part list



		AA-25-NO	
1	Gripper housing	AA-20-1	1
2	Right jaw	AA-21-1	2
3	Left jaw	AA-21-2	3
4	Piston	AA-25-1	4
5	Magnet housing	AA-20-4	5
6	Magnet	PAR-06-7	6
7	Spring	AA-20-7	7
8	Cylinder	AA-20-3	8
9	Cylinder	AA-25-2	9
10	Dowel pin	SPINA-019 (Ø4x14 mm DIN6325)	10
11	Elastic pin	SPINA-120 (Ø3x26 mm DIN7346)	11
12	Screw	VITE-152 (M3x12 mm DIN7985A INOX A2)	12
13	Nut	VITE-093 (M6 DIN934 INOX A2)	13
14	Grub screw	VITE-214 (M6x20 mm DIN913 INOX A2)	14
15	Dynamic gasket	GUAR-058 (20x14x3)	15

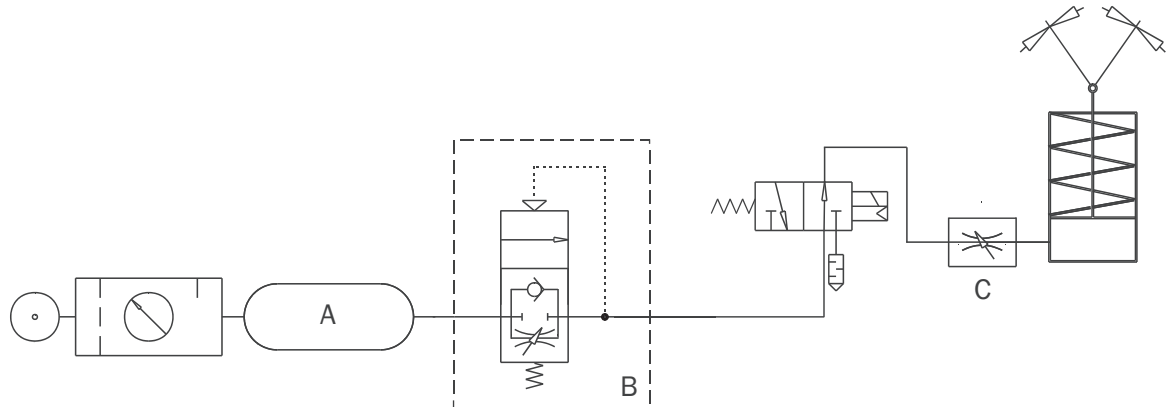
### Pneumatic circuit

Possible problems on a compressed air circuit:

- 1- Pressure variation;
- 2- Pressurizing with empty cylinders;
- 3- Excessive speed of the jaws.

Possible solutions:

- 1- Compressed air storage (A);
- 2- Start-up valve (B);
- 3- Flow controller (C).



### Compressed air feeding

The gripper is fed by M5 fittings (not supplied).

The compressed air, must be filtered from 5 to 40  $\mu\text{m}$ .  
Maintain the medium selected at the start, lubricated or not, for the complete service life of the gripper.

The pneumatic circuit must be pressurized progressively, to avoid uncontrolled movements.

